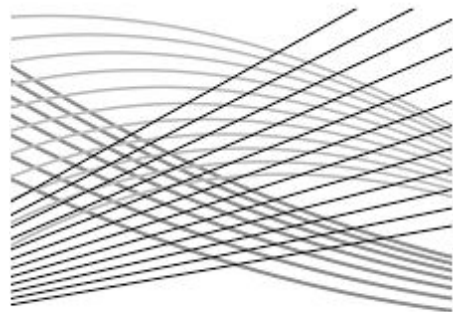


Catalogue 2020



SoluzioniTessili
RIGGING

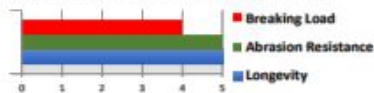
Catalogue 2020 - Splices and ropework

DYNEEMA® COVERED EYE	COVERED EYE SPLICE	STRIPPED EYE SPLICE	PRO STRIPPED EYE SPLICE	SUPERCABLE SPLICE	MANUAL TAPERING
					
MACHINE TAPERING	DIAMETER INCREASE	SHORT-SHEET LOOP	HOIST MARKERS	PRO TAIL	WHIPPING
					



Traditional covered loop

Strong, resistant, aesthetically clean and durable.

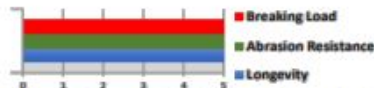


Construction: Dyneema® braided core and cover
Material: Dyneema®SK78, Dyneema®SK99



Offshore Loop with Dog-Bone

This loop combines the properties of the Dyneema® loop, in terms of lightness and strength, with the characteristics of classic steel shackles. Additional advantage is that this loop can be opened and closed.



Construction: Dyneema® braided core and cover Dog Bone
Material: Dyneema®SK99, Dog Bone SS 17-4PH or aluminium alloy

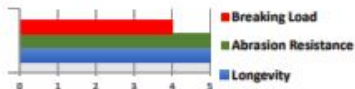
Traditional Loops & Straps		
Configuration		Safety Factor
Vertical		1,0
Basket		2,0
Choked		0,8
Dog-Bone		1,6

Loops	Max WL (ton), In VERTICAL Configuration						
	1	2	3	5	7,5	10	15
Product Description							
Covered loop 20-30 cm	TCL2030-01	TCL2030-02	TCL2030-03	TCL2030-05	TCL2030-075	TCL2030-10	
Covered loop 30-40 cm			TCL3040-03	TCL3040-05	TCL3040-075	TCL3040-10	
Unidirectional Covered Loop	UDCL-01	UDCL-02	UDCL-03	UDCL-05	UDCL-075	UDCL-10	
Offshore Loop (load in Dog-Bone config.)			OSBL-03	OSBL-05	OSBL-075	OSBL-10	OSBL-15



Traditional single strop

A strong opening fitting (for forestay strop, lock system, extensions, tie rods) which can be used in-line, double or with a dog bone

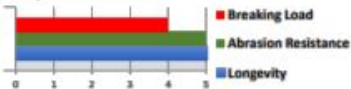


Construction: Dyneema® braided core and cover
Material: Dyneema®SK78, Dyneema®SK99



Mega loop & Mega strops

We have specifically designed and manufactured a diverse range of high-load strops and loops for the mega-yacht industry.



Construction: Dyneema® braided core and cover
Material: Dyneema®SK78, Dyneema®SK99



Unidirectional single strop

This reduced-diameter loop delivers maximum performance, is light, strong and reduces elongation.



Construction: Dyneema® unidirectional core and Dyneema® braided cover
Material: Dyneema®SK99 UD

Traditional Loops & Strops

Configuration		Safety Factor
Vertical		1,0
Basket		2,0
Choked		0,8
Dog-Bone		1,6

Strops	Max WL (ton), in VERTICAL Configuration											
	1	2	3	5	7,5	10	15	20	25	30	35	
Single Strop 20-30 cm	TSS2030-01	TSS2030-02	TSS2030-03	TSS2030-05	TSS2030-075	TSS2030-10						
Single Strop 30-40 cm			TSS3040-03	TSS3040-05	TSS3040-075	TSS3040-10						
Unidirectional Single Strop	UDSS-01	UDSS-02	UDSS-03	UDSS-05	UDSS-075	UDSS-10						
Mega Loop & Strop						ML-10/MS-10	ML-15/MS-15	ML-20/MS-20	ML-25/MS-25	ML-30/MS-30	ML-35/MS-35	





Soft Shackle – SS

This most commonly used soft shackle, makes for a good compromise between cost, strength and longevity.



Construction: Dyneema® braided core
Material: Dyneema®SK99



Dyneema® Covered Soft Shackle - SSC

This high-quality Soft Shackle is best suited for situations that require more strength, both load and friction-wise.



Construction: Dyneema® braided core and cover
Material: Dyneema®SK99



Super-Light Soft Shackle - SSL

Best suited for (low-load) areas where longevity is a must.



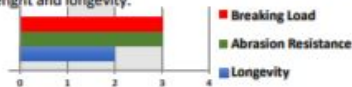
Construction: Dyneema® cover
Material: Dyneema® cover

Soft Shackle	Max WL (ton)												
	0	0,4	0,6	1,0	1,25	1,5	2,0	2,25	2,5	3,0	4,0	04,5	5
Product Description													
No Cover Single Lap		SS1L-03	SS1L-05	SS1L-08		SS1L-12			SS1L-20				
No Cover Double Lap					SS2L-05		SS2L-08			SS2L-12			SS2L-20
Covered Single Lap		SS1LC-03	SS1LC-05	SS1LC-08		SS1LC-12	SS1LC-16	SS1LC-18	SS1LC-20				
Covered Double Lap					SS2LC-05		SS2LC-08			SS2LC-12	SS2LC-16	SS2LC-18	SS2LC-20
Super Light	SS-Light												



TRADITIONAL LOCK STROPS

This, most commonly used lock strop, offers a good mix regards cost, strenght and longevity.

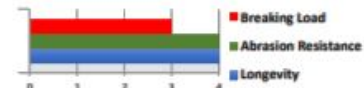


Construction: Dyneema® braided core and cover
Material: Dyneema®SK99



TRADITIONAL LOCK STROPS COVERED

The cover prolong the strop's life and prevent chafing.

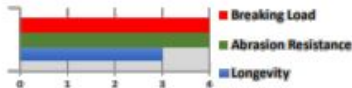


Construction: Dyneema® braided core and cover
Material: Dyneema®SK99

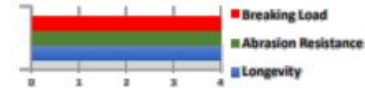


UNIDIRECTIONAL SLING LOCK STROPS

High-performance strops designed especially for the Grand Prix market, or wherever a reduced diameter is a necessary. Thanks to unidirectional fibres they offer an unsurpassable performance-level due to their high breaking load and elongation resistance.



Construction: Dyneema® unidirectional core and Dyneema® braided cover
Material: Dyneema®SK99 UD



Lock Strops	Max WL (ton)			
	4	6	8	10
Product Description				
Traditional	TLS-04	TLS-06	TLS-08	TLS-10
Traditional Braided	TLS-B-04	TLS-B-06	TLS-B-08	TLS-B-10
Unidirectional Braided Sling	UDBSL-04	UDBSL-06	UDBSL-08	UDBSL-10
Unidirectional Braided Sling Boned	UDLS-B-04	UDLS-B-06	UDLS-B-08	UDLS-B-10
Mega yacht	-	-	-	MYLS-10

MARTIN BREAKER

DESIGNED FOR TYLASKA® T12 - T16 - T20 - T30

This is the most commonly used carabiner in the regatta circuit. It is designed and customized to eliminate the need to be on the bow.

Construction: Stainless Steel HR components and customized Tylaska®. As the line is Dyneema® made, it's suited for high load

Material: SS and Dyneema®SK99



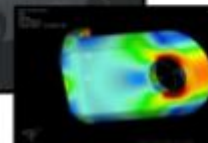
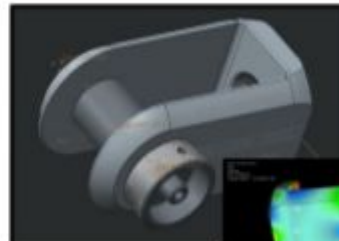
MARTIN BREAKER + CUSTOM FITTING

FOR TYLASKA® T12 - T16 - T20 - T30

We are able to design and deliver bespoke fittings, such as a Tylaska® for the downfucker. The system is designed for the tack of the furling sail.

Construction: : Stainless Steel HR components and customized Tylaska®. The line is suitable for high load as it's Dyneema® made.

Material: Steel 17-4PH (High load) and Dyneema®SK99



Catalogue 2020 - Dog Bones

CLASSIC DOG BONE

Material: SS AISI 630- 17-4 PH
High Resistance



RACE DOG BONE

Material: SS AISI 630- 17-4 PH
High Resistance



OFFSHORE DOG BONE

Material: SS AISI 630- 17-4 PH
High Resistance



CLASSIC	Material	Ø _{INT}	Length	Ø _{ROPE MAX}	Weight
{-}	{-}	[mm]	[mm]	[mm]	[g]
DBC0	17-4 PH SS-HR	5,5	25,5	6	7
DBC1	17-4 PH SS-HR	7	33	8	15
DBC2	17-4 PH SS-HR	9	40,5	11	29
DBC3	17-4 PH SS-HR	11	48	13	50
DBC4	17-4 PH SS-HR	13	55,5	16	79
RACE	Material	Ø _{INT}	Length	Ø _{ROPE MAX}	Weight
{-}	{-}	[mm]	[mm]	[mm]	[g]
DBR0	17-4 PH SS-HR	6	32	7	12
DBR1	17-4 PH SS-HR	7,5	42	10	23
DBR2	17-4 PH SS-HR	8,5	52	12	41
DBR3	17-4 PH SS-HR	10	59	15	61
DBR4	17-4 PH SS-HR	13	71	18	96
OFFSHORE	Material	Ø _{INT}	Length	Ø _{ROPE MAX}	Weight
{-}	{-}	[mm]	[mm]	[mm]	[g]
DBOFFC0	17-4 PH SS-HR	9,5	44		28,5
DBOFFC1	17-4 PH SS-HR	11,5	51		45